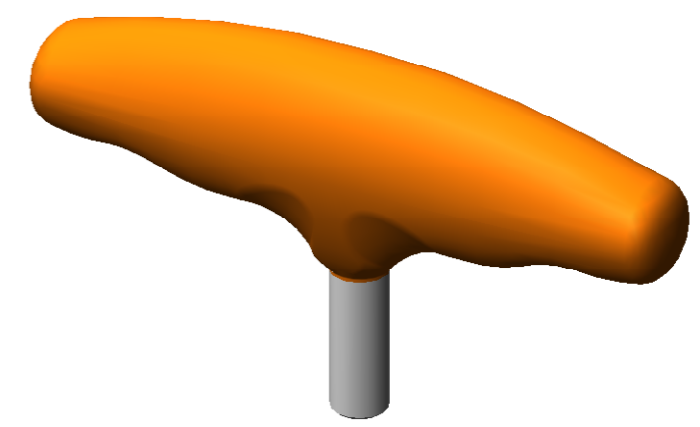
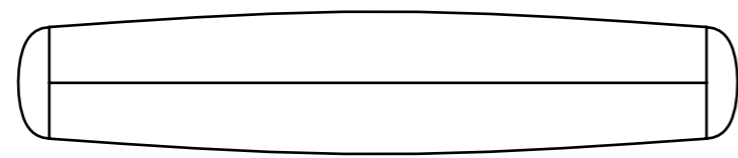
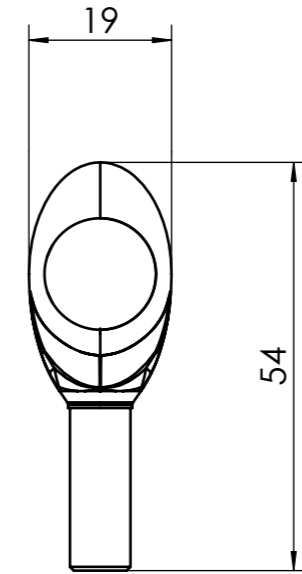
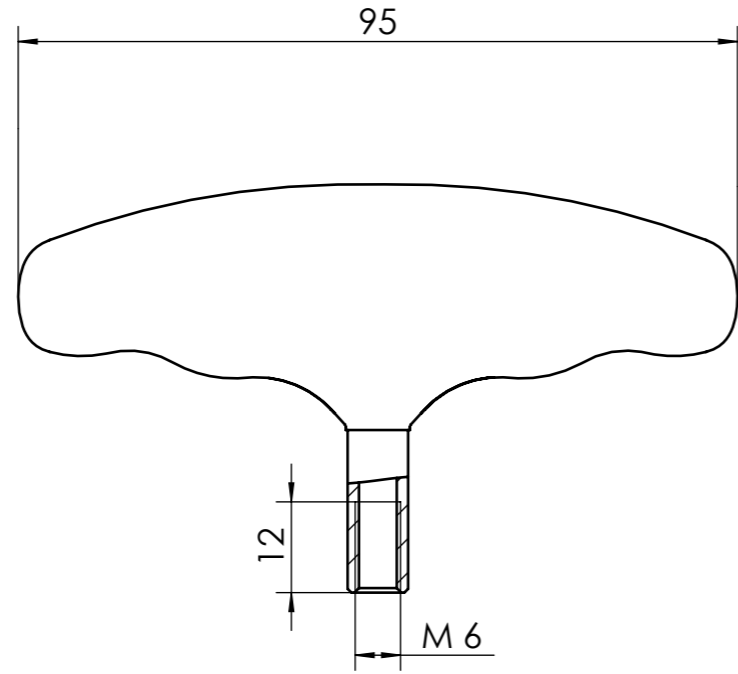
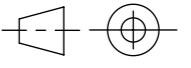


Schutzvermerk beachten: DIN ISO 16016
Protection notice remarks: 4 inch
100 mm



Bohrungskoordinaten +0.1
Fehlende Maße sind dem
3D-Datensatz zu entnehmen

			DIN ISO 5462-2 Projektionmethode 1  FIRST ANGLE PROJECTION		Werkstoff/MATERIAL		Massst. SCALE 1:1
					Gez./DRAWN	Dat./DATE 13.03.2009	Name/NAME W+S
POS. Aenderung/MODIFICATION			Dat./DATE		Gepr./CHECKED		
Masse ohne Toleranzangabe nach DIN ISO 2768-fH (Werte in mm)			DIMENSION WITHOUT TOLERANCE TO ISO 2768-fH (ALL DIMENSIONS IN mm)		Oberflächenangaben nach DIN ISO 1302 (Werte in Ra) SURFACE SPECIFICATION TO DIN ISO 1302 (VALUE IN Ra)		
W+S Solutions W+S Solutions GmbH & Co. KG D - 78532 Tuttlingen - Nendingen • Mülheimer Str. 37 Tel. +49 (0) 7461 962 965 2 • info@wplus-solutions.de			Benennung/TITLE Datenblatt T-Griff T19-095-M6		Bl.-Nr. SHEET 2		Dokument-Nr./DOCUMENT-NO. 10.555
Erg.-Ben./ADDIT-TITLE					Bl.-Anzahl SHEETS 2		Pos.-Nr./POS.-NO. Nur per CAD aendern CHANGE BY CAD ONLY
							Rev./REV. DIN A 3